



WorkAlign® Scheduler

Excellent! The WorkAlign Scheduler has allowed us to schedule the work we have much more efficiently.
Barrick Gold

VIZIYA WorkAlign® Scheduler, a purpose-built solution for Maintenance, adopts a production asset centric approach to the planning and scheduling of maintenance work and assets.

Unlike other scheduling tools, WorkAlign® Scheduler delivers an unprecedented level of flexibility and intelligence that focuses on asset criticality, urgency, and PM compliance to maximize production uptime and to optimize asset utilization. Since work management is the most important business process in an asset intensive organization, WorkAlign® Scheduler is designed to control the maintenance workflow, creating a greater opportunity to positively impact uptime and availability. For example, our Work Order Quality Check ensures that critical work is scheduled for the right assets, at the right time and is planned properly. The user friendly and intuitive Scheduler provides Work Order planning, scheduling, execution and reporting with pre-built real-time KPIs designed for best-in-class maintenance metrics and compliance reporting. Additional advanced capabilities include Multi-day Work Order Splits, Change En Masse, and Scheduling at the functional equipment, resource and crew level. Integration to your Human Resources system is an option, but not required, providing for more timely manpower updates plus the opportunity to schedule outside contractors efficiently and accurately. The solution supports multi-platform ERP environments and instances and the fixed-bid solution is simple and cost-effective to implement.

BENEFITS

Drive Asset Utilization

- Increase asset utilization and availability 1-2% by assuring that multiple work orders are coordinated for execution at the same time versus multiple downtimes

Manage Risks

- Drive user adoption and accountability with an intuitive and flexible user interface
- Safeguard compliance and data integrity with a single source of truth
- Protect your Infor investment with advanced functionality

Realize Cost Savings

Control the workflow and drive cost reduction:

- 20-25% wrench time improvement
- 15-20% reduction in non-specialty contractors and overtime
- 50% planner & scheduler efficiencies allow them to focus on process improvement initiatives

FEATURES

- **Advanced features** such as Work Order Quality Check, Material Availability Check, Multi-day Work Order Splits
- **Crew-based scheduling** with high degree of flexibility and on-the-fly changes
- **Rapidly schedule work orders** to any day, shift, crew, and/or resource type with detailed resource availability for maximum allocation
- **Contractor scheduling** with no HR system integration required
- **En masse/bulk work order scheduling**
- **Instant load analysis** with graphical feedback – no over/under scheduling
- **Quickly and efficiently sort and select work** to be scheduled
- **Easily schedule work orders** at any level in the work order hierarchy



KEY FEATURES

Flexible Crew Builder Supports Your EAM Work Flow Processes

Crew Builder allows grouping of resources from different Work Centers into logical working units. Crew Builder provides the flexibility to manage crews the way they work best in your environment – by craft, team, or a combination.

Improve Schedule Compliance with Availability

Availability manage shifts and hours and provides data to accurately measure organization, department and resource loading while performing planning and scheduling maintenance activity.

Improve Execution with Work Order Quality Check

Improve overall efficiency of planning and scheduling by testing the integrity of unscheduled work orders. Work orders that do not meet a minimum standard of completeness can be filtered from the scheduling process, improving overall execution.

Graphical Scheduling Optimizes Efficiency

Using powerful filters, the “ready” to schedule work orders can be quickly sorted. Scheduling to the day, shift and/or crew is performed in a staged “what if” scenario, allowing the user to evaluate the impact using real time KPIs. Once satisfied, the schedule is posted to Infor and available to staff.

KPI Control Center Improves Compliance and Control

Key Performance Indicators (KPIs) are metrics used to help optimize the efficiency of maintenance activity and provide feedback to improve overall compliance. More than 25 pre-configured real-time KPIs are graphically presented across the top of the planning, scheduling, and supervisory modules.

Supervisor Daily Worksheet Provides Visibility & Control

Supervisor can review work center and resource schedules, reallocate work, add resources, or roll work over to balance loads. He can also search the “ready” backlog for break-in work or publish crew schedules.

Supervisor Hour Entry Improves Data Integrity and Approval Process

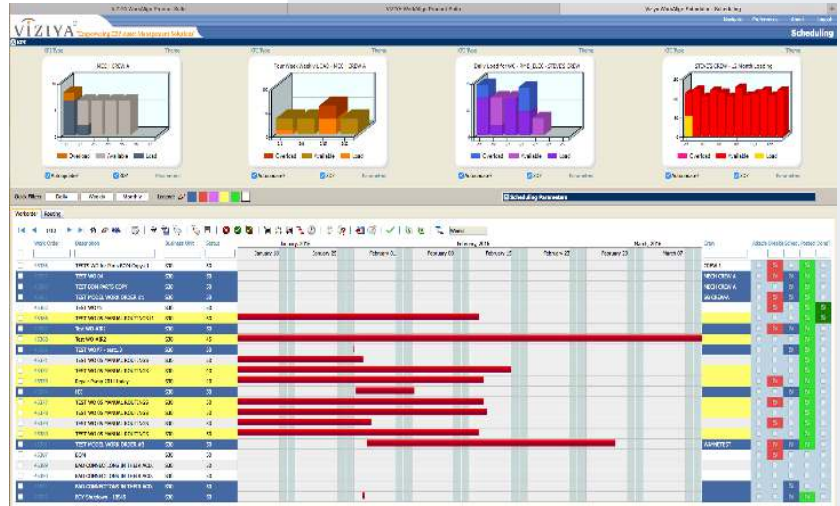
Supervisor can review and approve time entry allocations from the craftsman. He can edit, reject or accept submitted hours and post directly to Infor.

My Schedule Improves Data Integrity and Approval Process

Craft enters time entry, submits to the supervisor for review and approval prior to posting final confirmations to Infor. He can also review past work performance using the integrated KPIs.

Security Manages Roles, Users and Restrictions

Security provides user-level access control through modules called “manage roles,” “manage users,” and “restrictions.” All Infor users are configured for access to the application using the login credentials of your Infor system.



GARTNER thinks we’re “COOL” – they named VIZIYA a “Cool Vendor in Manufacturing!”

For more information on all our products
www.viziya.com
email: info@viziya.com
VIZIYA Head Office:
50 Dundas Street East, Suite 201
Hamilton, ON, Canada L9H 7K6
905.544.4144

