



WorkAlign® Analytics

*We were able to immediately satisfy reporting needs and introduce users to the benefits of business intelligence reporting.
Major Oil & Gas Company*

WorkAlign® Analytics provides actionable data out-of-the-box to drive improvement in uptime, schedule compliance, backlog, craft utilization, and overtime.

WorkAlign® Analytics provides full visibility of your maintenance data throughout your work management process. The out-of-the-box product delivers ready-to-use reports that allow you to jump-start your reporting initiatives. WorkAlign® Analytics is an on-premise HANA Live EAM solution built on the SAP Business Objects Business Intelligence (BI) platform.

WorkAlign® Analytics provides the flexibility to report at the site or corporate level. You have the flexibility to configure your definitions based on your business processes, for example, your definition of emergency work or schedule compliance. Ability to dig into the report details assist you in your root cause analysis

Configurable extract, transform, and load (ETL) capabilities and drag-and-drop reporting let you avoid the complexities, costs, and risks of custom or hard coded reports.

BENEFITS

Drive Asset Utilization

- Spend more time planning and improving asset utilization vs. creating / building in house reports or analytics solutions
- Provide actionable data out-of-the-box to drive improvement: equipment availability, downtime, schedule compliance, and backlog

Manage Risk

- Reduce implementation time with an out-of-the-box analytics suite with limited internal IT resource
- Drive user adoption and accountability with pre-built dashboards and reports

Drive Cost Savings

- Provide actionable data out-of-the-box to drive cost improvement: craft utilization, overtime, stock outs, expedited shipping
- Access to configurable tables allow ad hoc reporting that reflect your business and process without costly customization

FEATURES

- **Ready to use**, with out-of-the-box reports and dashboards built to meet maintenance organization needs
- **Designed specifically for maintenance data** coming from SAP
- **Pre-built data transfer (ETL) mappings** eliminate the effort of finding the source of your data and mapping it accurately
- **Filters and drill-downs**; comparisons by period; dynamically views for personalized reports
- **Purpose-built for SAP Environment**
 - On-premise solution
 - SAP on HANA Live
 - Business Objects Business Intelligence



KEY FEATURES

Improve Your Budget Performance with Asset Rollup Report

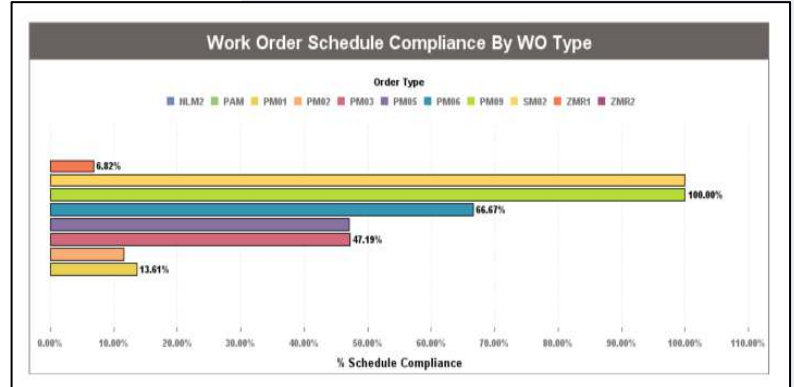
Drill up and down through your asset hierarchy to see the aggregate cost of your assets and all of its children at any level. Compare organizational forecasts versus actual spending. Identify assets that are consuming the most resources and take proactive steps to improve.

Improve Uptime by Targeting the Top 10 Bad Actors for Improvement

Start with the highest priority assets and focus on the critical cost areas. Drill down and see the work order activity on each of the assets, planned versus unplanned work orders and regular versus overtime versus contractor hours. Armed with data, update maintenance process improvements.

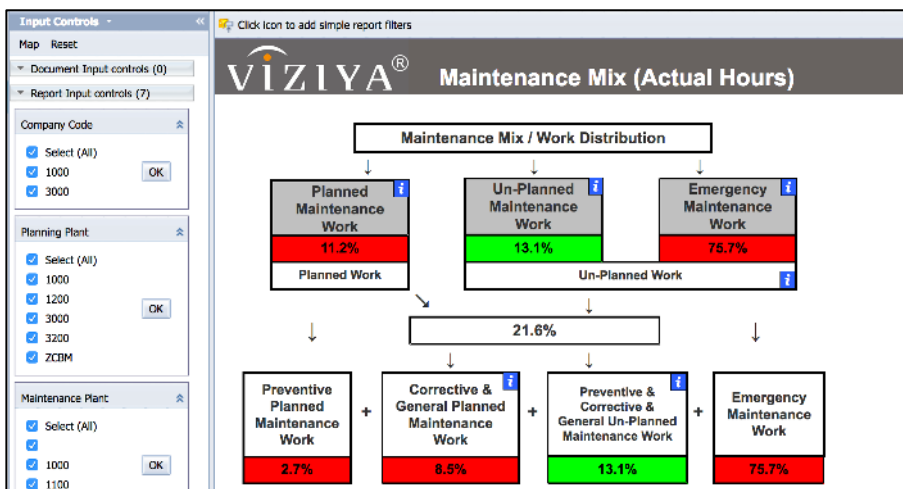
Improve Uptime by Understanding Your Craft Utilization

Capture your actual resource hours and compare them to your theoretical maximum (if all workers were performing work order operations 100% of the time). Compare planned resource requirements versus actual charged hours to see how effectively you are scheduling your resources. Identify problem areas and update processes.



VIZIYA[®] Top 10 Worst Actors (Frequency)

Top 10 Worst Actors (Frequency) by Failure Cause per Equipment		
Rank	Equipment / Functional Location	Number of Failures
1	P-ZCBM-N001	4
2	P-3000-N001	4
3	P-1000-N001	4
4	P-ZCBM-N003	3
5	P-ZCBM-N002	3
6	P-1000-N007	3
7	P-3000-N007	2
8	P-1000-N004	2
9	K1-ZPW-2	1
10	K1-KGV	1
Grand Total		27



For more information on all our products
www.viziya.com
 email: info@viziya.com
 VIZIYA Head Office:
 50 Dundas Street East, Suite 201
 Hamilton, ON, Canada L9H 7K6
 905.544.4144

