



## WorkAlign<sup>®</sup> Analytics

*With VIZIYA Analytics, Premier Coal is now able to view weekly and monthly reports.  
... standard cost reports have enabled maintenance to justify their budget requests.  
Premier Coal*

### WorkAlign Analytics provides actionable data out-of-the-box to drive improvement in uptime, schedule compliance, backlog, craft utilization, and overtime.

WorkAlign Analytics is a single, consolidated data warehouse for all of your eAM data built on the Oracle Business Intelligence (BI) platform. Data centralization enables visibility at all levels, including corporate, region, site, department, asset, instance, task, and more. WorkAlign Analytics delivers hundreds of ready-to-use reports and dashboards to allow you to jump-start your reporting initiative.

WorkAlign Analytics supports multi-platform and multi-instance environments, providing the flexibility to report at the site or corporate level. For example, a company may need to consolidate analytics from multiple ERP suites or navigate the transition from one ERP to another.

Configurable extract, transform, and load (ETL) capabilities and drag-and-drop reporting let you avoid the complexities, costs, and risks of custom or hard coded reports.

### BENEFITS

#### Drive Asset Utilization

- Spend more time planning and improving asset utilization vs. creating / building in house reports or analytics solutions
- Provide actionable data out-of-the-box to drive improvement: equipment availability, downtime, schedule compliance, and backlog

#### Manage Risk

- Reduce implementation time with an out-of-the-box analytics suite with limited internal IT resource
- Drive user adoption and accountability with hundreds of pre-built dashboards and reports

#### Drive Cost Savings

- Reduce your operational expenses by eliminating capital purchases and maintenance of servers  
Provide actionable data out-of-the-box to drive • cost improvement: craft utilization, overtime, stock outs, expedited shipping
- Access to configurable tables allow ad hoc reporting that reflect your business and process without costly customization

### FEATURES

- **Ready to use**, with out-of-the-box reports and dashboards built to meet maintenance organization needs
- **Designed specifically for maintenance data** coming from multiple ERP solutions
- **Pre-built data transfer (ETL) mappings** eliminate the effort of finding the source of your data and mapping it accurately
- **Filters and drill-downs**; comparisons by period; dynamically views for personalized reports
- **Integration with VIZIYA WorkAlign Suite**: Scheduler, Warranty Tracker, Maintenance Budgeting, Mobile
- **Flexible, fixed-bid deployment options**
  - Fully managed cloud service
  - Turnkey appliance fully configured by VIZIYA
  - On-premise solution



KEY FEATURES

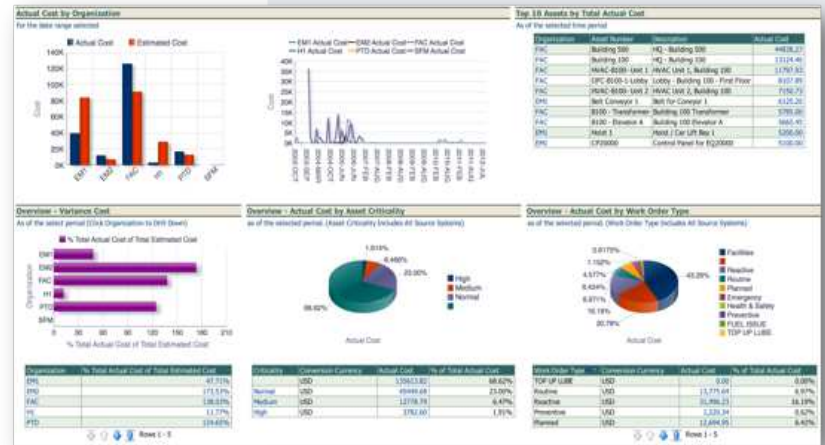
Improve Your Budget Performance with Asset Rollup Report

Drill up and down through your asset hierarchy to see the aggregate cost of your assets and all of its children at any level. Compare organizational forecasts versus actual spending. Identify assets that are consuming the most resources and take proactive steps to improve.



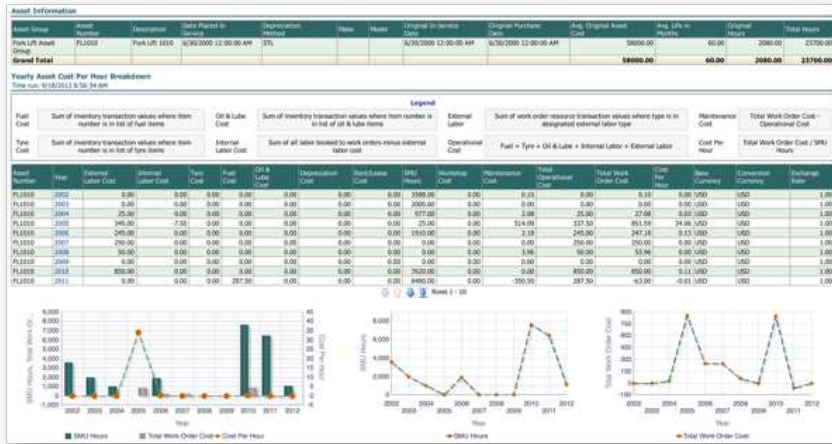
Improve Uptime by Targeting the Top 10 Bad Actors for Improvement

Start with the highest priority assets and focus on the critical cost areas. Drill down and see the work order activity on each of the assets, planned versus unplanned work orders and regular versus overtime versus contractor hours. Armed with data, update maintenance process improvements.



Improve Uptime by Understanding Your Craft Utilization

Capture your actual resource hours and compare them to your theoretical maximum (if all workers were performing work order operations 100% of the time). Compare planned resource requirements versus actual charged hours to see how effectively you are scheduling your resources. Identify problem areas and update processes.



For more information on all our products  
www.viziya.com  
email: info@viziya.com  
VIZIYA Head Office:  
50 Dundas Street East, Suite 201  
Hamilton, ON, Canada L9H 7K6  
905.544.4144

