

# WorkAlign® Data MD

*Mending the Health and Wealth of your BI Data*

Enterprise Level - eAM Data Management application

Rapid, mass data updates using one, some, or all selection process

Update and modify WO Attributes such as:

- Description
- Priority
- Status
- Activity Type
- Planning Indicator
- Tagout Required
- Shutdown Code

Work Order Reconciliation

- Complete
- Close
- Cancel

Real-Time Interactive KPI's.

Web based and seamlessly integrated to your CMMS

Data MD is the perfect companion tool for improving the utilization and ROI of your BI Analytics

Make informed business decisions, based on good, clean healthy data

Accurate and complete maintenance data will save you time, money and effort

WorkAlign® Suite of Products:

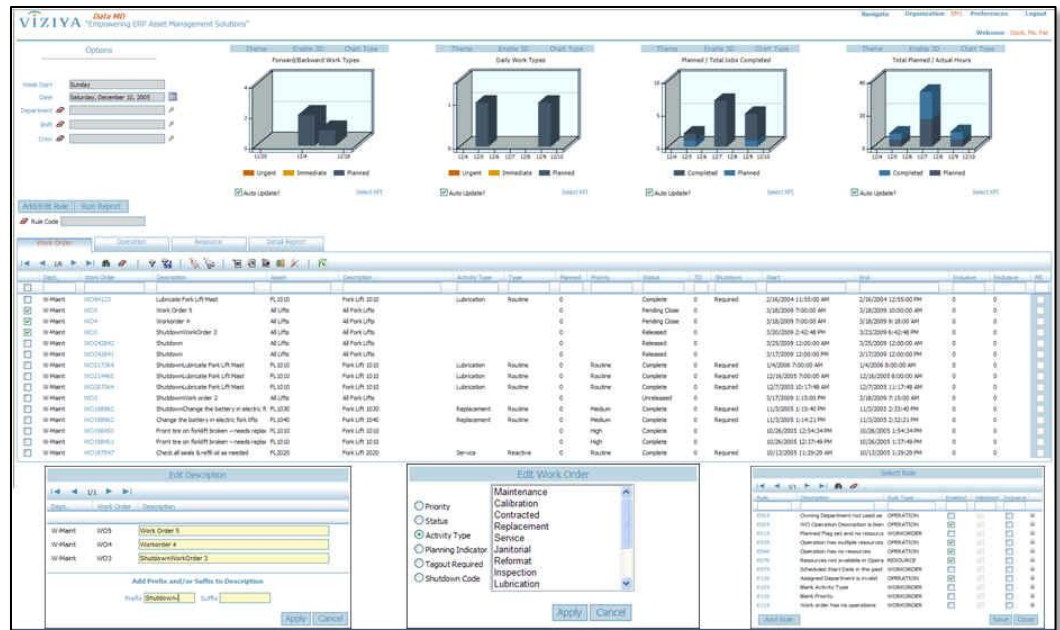
- Scheduler
- Analytics
- Oracle Gateway
- Data MD
- Warranty Tracker



Far too often the very data that drives your BI Analytics fails to meet a minimum completeness or accuracy to allow for sound business decisions.

Data MD is a standalone tool, specifically designed to improve and maintain the health and Integrity of your eAM Data.

A by-product of our popular "Work Order Quality Check" Module in the WorkAlign® Scheduler, this web-based application seamlessly integrates in real-time with your CMMS, allowing you to diagnose and correct inherent imperfections in your eAM Data.



Applying the powerful filters and configurable rule-based validation engine allows the user to query and sort your maintenance data into smaller more meaningful subsets while correcting deficiencies of critical asset information.

Selecting one, some, or all of the filtered dataset, users can easily perform mass data updates across multiple work records.

- "Drill down" or "Roll up" within the Work Order hierarchy. Tabbed views available at the "Header", "Operation", or "Resource" levels.
- Add, Edit or Delete multiple attributes such as Work Order Description, Priority, Activity Type or Status.
- Complete, Close or Cancel obsolete or outdated maintenance orders.
- Built-in export function provides detail reports that can be used for tackling particularly large or otherwise unique data anomalies requiring the assistance of subject matter experts.

For more information on all our products visit us at [www.viziya.com](http://www.viziya.com) or email us at [info@viziya.com](mailto:info@viziya.com)

